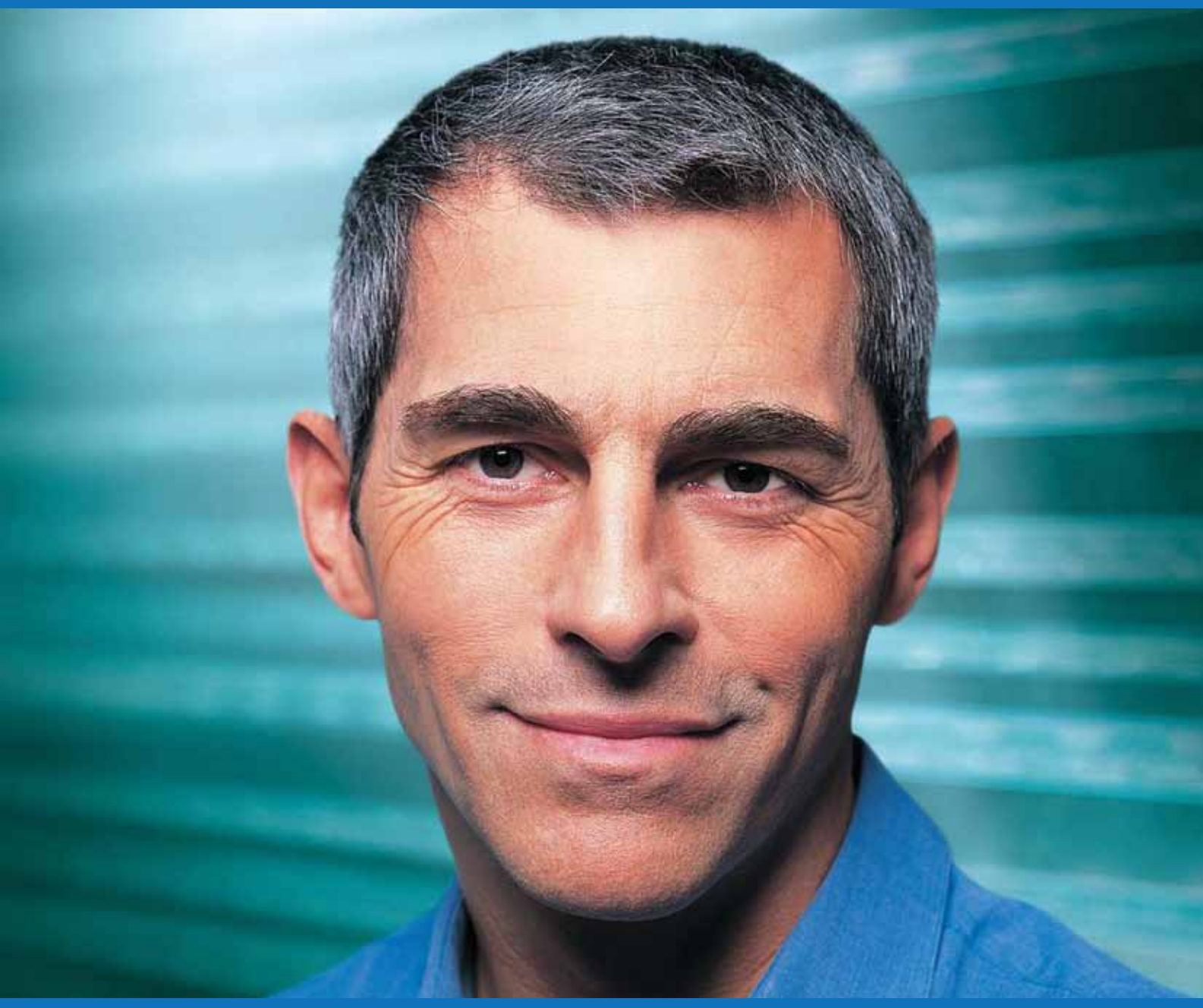


Performance and Economy



Engine and Transmission Lubricants
for Heavy Duty Vehicles



DIESEL ENGINE OILS : ELF PERFORMANCE							
	ACEA	API	Global DHD	Daimler Chrysler	MAN	Renault Trucks	VOLVO
EXPERTY 10W-40 Semi-synthetic Very high performance	E4 E5	CF		228.5	M3277	RXD	VDS-2
VICTORY 15W-40 Mineral Very good performance	E5	CI-4	DHD-1	228.3	M3275	RLD	VDS-3
TROPHY DX 15W-40 Mineral Good performance	E3	CH-4		228.3	M3275	RD	VDS-2
Legend : New official standards							

GEARBOX AND AXLE OILS : TRANSELF					
	Uses	API	ZF TE-ML	MAN	DaimlerChrysler
EP 80W Mineral	Gearbox	GL-4	02A, 17A	341 Type N	235.1
PERFORMANCE SUPER D 30,40 Mineral	Gearbox	CF	Grade 30 02C 04B	M 270	228.0
Type B 90 Mineral	Axle	GL-5	05A, 07A, 16C, 17B	342 Type N	235.0
Type B 80W-90 Mineral	Axle	GL-5	05A, 07A, 16B	342 Type N	
Type B 85W-140 Mineral	Axle	GL-5			

OIL FOR AUTOMATIC GEARBOXES AND POWER STEERING SYSTEMS				
	Uses	ZF TE-ML	MAN	VOITH
ELFMATIC G3 Dexron III G	Auto. Gearbox & P.A.	02F, 03D, 04D, 14A, 17C	339 Type F	55.6335.32
Legend : PA : Power-Assisted				



STANDARD RANGE

**Even when
you've minimized
your operating costs...**

**...there are still
two ways to
save money:**

**FUEL AND
MAINTENANCE.**



**The Standard range:
up-to-date and
consistent**

**NEW FORMULATIONS
NEW STANDARDS
NEW PERFORMANCES**

The new ELF PERFORMANCE Standard range has been developed by the Group Research Center, and is characterized by new formulations. You will appreciate the performance resulting from these new formulas:

- maintains the oil film in extreme conditions
- improved anti-wear capability
- permanently clean pistons

Depending on your maintenance schedule, you can select lubricants that are specially recommended for standard or extended oil-change intervals. This new range of oils offers technical innovations and can also be shaped according to your fleet management needs.



Suitable for all Heavy Duty Engines and Transmissions



The new ELF PERFORMANCE Standard range has been developed to comply with the truck manufacturers' most severe requirements, and can exactly match the specifications of any vehicle on the market, including the most recent models. These engine oils satisfy the technical requirements of diesels with low pollutant emissions (Euro 3).

**Consider the
drive train as a simple unit
A WINNING COMBINATION.**

Optimizing the operation of every component

Every moving part in the drive train, from the engine itself to the final bearing in the rear axle, is subject to friction, implying heating and a consequent loss of energy.

